



*TEAM's custom-designed products include:*

- Transmissions*
- Axle Housings*
- Differentials*
- Continuously Variable Transmissions (CVTs)*
- Transaxles*
- Transfer Cases*
- Spindles*
- Drive Shafts*
- Carriers*
- Steering Knuckles*
- Brake Components*

## **From Concept to Completion, Our Wheels Never Stop Turning**

*We never stop thinking about your machines and how to energize your customers' experiences.*

*We've developed an integrated, technology-based process that enables us to achieve continuous improvement.*

*It's a six-stage cycle: research and development, design, rapid prototyping, testing, manufacturing and assembly. Throughout every stage, we search for ways to maximize our manufacturing efficiency and improve your components.*

*The results will leave competitors eating your dust.*



## **Three Decades of Blazing Trails**

*TEAM Industries is a leading engineering and manufacturing company that provides technologically-advanced products and services for diverse markets. Headquartered in Bagley, Minnesota, we've been developing performance and reliability-enhancing components for original equipment manufacturers since 1967.*

*Our 1,300+ employees bring a strong work ethic, personal drive and an unrivaled passion to excel at all we do. We're more than your supplier; we're frequently your customer. Even away from work, we're thinking about ways to improve your machines, while we put them to the test on the roads, hills, lakes and streams in our own backyards.*

*Regardless of your market or product, no one has processes, equipment or manufacturing expertise superior to TEAM's. With our rare combination of technological sophistication and hometown values, you're guaranteed the results you require and more.*

*Take a look at how TEAM can put some teeth into your machines and help you push the limits in your industry.*

[www.TEAM-IND.com](http://www.TEAM-IND.com)



*TEAM Industries • Marketing & Product Development  
18880 Dan Street  
Detroit Lakes, MN 56501-6925  
(218) 847-9582  
info@TEAM-IND.com*



**Driving Innovation**





## Push it to the Limit

We do it every day at TEAM Industries, driving innovation to give your products more bite. Whether your products are off-road vehicles, industrial, or consumer equipment, TEAM puts teeth into your machines.

We start by asking what you want your machines to do. Then we design and build components that work together seamlessly to get it done. Our engineered solutions make your products faster, more powerful, more durable, more reliable and less expensive to manufacture and maintain. More importantly, they make your machines more enjoyable for your customers to own and put to the test.

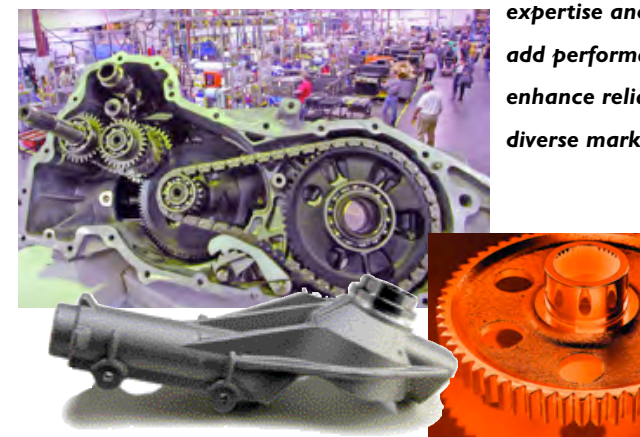
We kick it into gear with experience, advanced technology and integrated manufacturing expertise to meet and exceed your requirements. The results drive innovation in your industry, putting you at the head of the pack in the race for customers and market share.

Let TEAM be your partner in innovative solutions. We'll put some teeth into your machines and your business.

## Get the Competitive Edge

Your customers may not see TEAM in your machine, but they'll feel the results every time they rev it up. We develop and manufacture components that transform power and deliver it where you and your customers need it. Our

expertise and equipment add performance and enhance reliability in diverse markets, including:



Utility Vehicles

All-Terrain Vehicles (ATVs)

Snowmobiles

Motorcycles

Marine

Personal Watercraft

Golf Cars

Heavy Truck

Alternative On-Road Vehicles

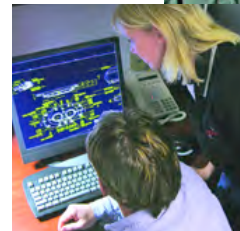
Turf, Lawn and Garden Care

Agriculture

Off-Highway Equipment

Construction Equipment

Contract Manufacturing



## Looking Down the Off-Road

### Research & Development

For a competitive advantage, you have to push the envelope. We help you do it by continuously searching for better ways to deliver power and reliability to you and your customers. Our advanced research and development not only anticipates and meets your needs, but creates new opportunities.

### Through R&D, TEAM:

- Develops advanced components that enhance your machines, such as auto-locking four-wheel-drive systems, advanced technology transmissions and innovative CVT systems.
- Creates new products or improves old ones that make your machines better. They include innovations such as small vehicle transaxles with integrated wet brakes.
- Ensures we are always using the latest manufacturing practices and technologies to improve efficiency, guarantee quality and deliver cost-effective solutions. Our design and manufacturing engineers continuously seek to integrate the latest in machining, tooling and manufacturing into our processes.

## Performing in the Clutch

### Design

Our design engineers are clutch performers. We have all the expertise, experience and technologically advanced tools needed to take your idea and make it real. We can quickly transform your concept into a scale model for hands-on review.



Our design staff includes more than 70 design and test engineers, project managers and skilled machinists. These professionals use Pro Engineer (Pro E) and other advanced design software to develop products that

push the limits of optimal performance and reliability. For you, their expertise translates into more accurate models, shorter development times, fewer parts, reduced vendor base and superior machine components – all of which saves you and your customers money in the long run.

## Putting it into Gear

### Rapid Prototyping

We don't just design it – we build it.

Our rapid prototyping facility and partnerships with reliable prototype casting vendors allow us to develop and create your prototype in a matter of weeks. We can also develop prototypes that introduce new or alternative designs and products to compare to your existing systems.

## Applying Science to Power

### Testing and Inspection

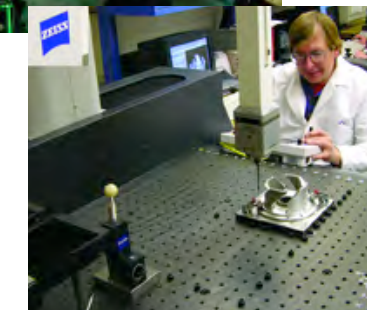
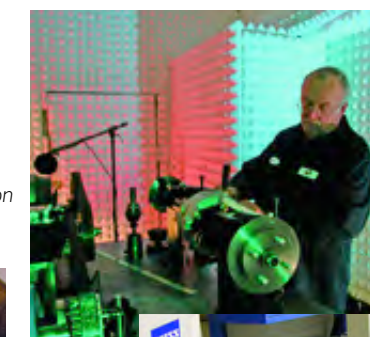
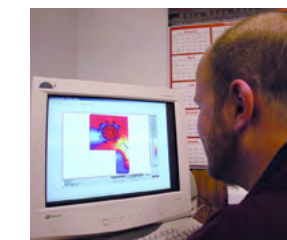
Once we build it, we try to break it.

We push our prototypes to the limits, testing for noise, extreme shock loads, space constraints, extended service life – whatever you require. Our professional snowmobile and ATV racing teams provide extreme testing, pushing our new designs beyond conventional limits.

Part specifications need to be amazingly tight for machines that wind up in the snow, water and mud. Yet, we meet and exceed them every time. We test and retest raw materials, processes and finished components, measuring within millionths of an inch when necessary. From metallurgy to X-ray, Zeiss measurement to Finite Element Analysis (FEA), it's advanced, science-based manufacturing at its finest.

In production, parts routinely go through four levels of inspection to validate FEA results, prove functionality and determine reliability:

- Incoming Raw Materials
- Set-Up and In-Process
- Metallurgical Examination
- Finished Goods



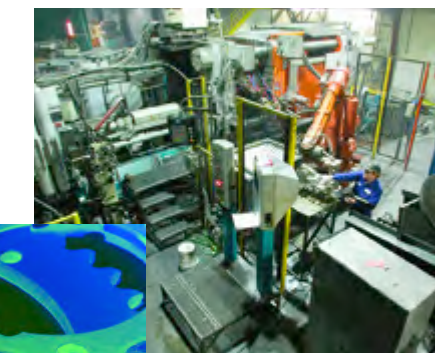
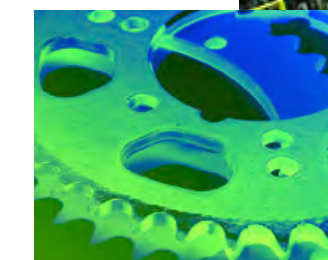
## Grinding it Out

### Manufacturing

At TEAM, we continuously improve our training, equipment and manufacturing processes so we can grind out the most durable and performance-enhancing steel, aluminum and iron components in the business. Our seven plants provide more than 850,000 square feet of technologically-advanced manufacturing space. All have attained or are seeking ISO 9001:2000 compliance and certification. In addition, we have manufacturing engineers at every facility who ensure that we are using the latest manufacturing and management procedures to deliver maximum manufacturing efficiency and quality.

### Our component manufacturing services include:

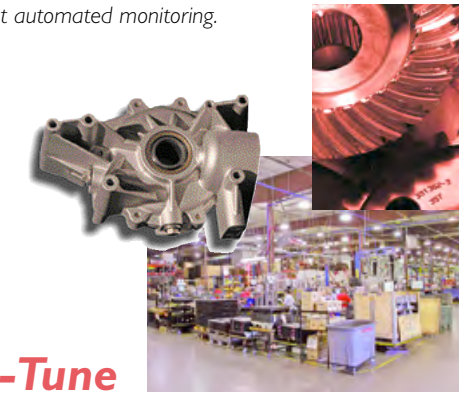
- Die-Casting
- Tool and Die Fabrication (Including Die-cast Tools)
- Fässler Honing
- CNC Machining
- CNC Shaping
- CNC Hobbing
- Gleason Phoenix Hypoid Gear Cutting
- Spline Rolling
- Robotics
- Precision Grinding (ID & OD)
- Cellular Manufacturing
- In-Line Induction Heat Treating
- In-House Carburizing
- Polishing
- E-Coat Painting
- Chromating



## Completing the Lap

### Assembly

After your components have been through our stringent testing processes, our assembly team puts them together. Our assembly facility features dozens of efficient, modular lines with single-piece flow to minimize WIP inventory, robotic assistance and constant automated monitoring.



## We'll Fine-Tune to Exceed Your Needs

TEAM's goal is to be a reliable solutions partner that adds long-term value to your products. If we need to reconfigure our plants, invest in new equipment or work around the clock to deliver your components quickly, we'll do it.

Each of our facilities has its own specialties and areas of expertise. This specialization not only drives innovation, but also provides maximum efficiency and manufacturing flexibility. By combining each of our plant's strengths, we're able to supply you with exceptional components that enhance power, performance and reliability for your customers.

## We Want to be Part of Your TEAM

TEAM is driving innovation for all of our customers, and we want to work with you. Contact us today. Together, we'll push the limits in your marketplace.

